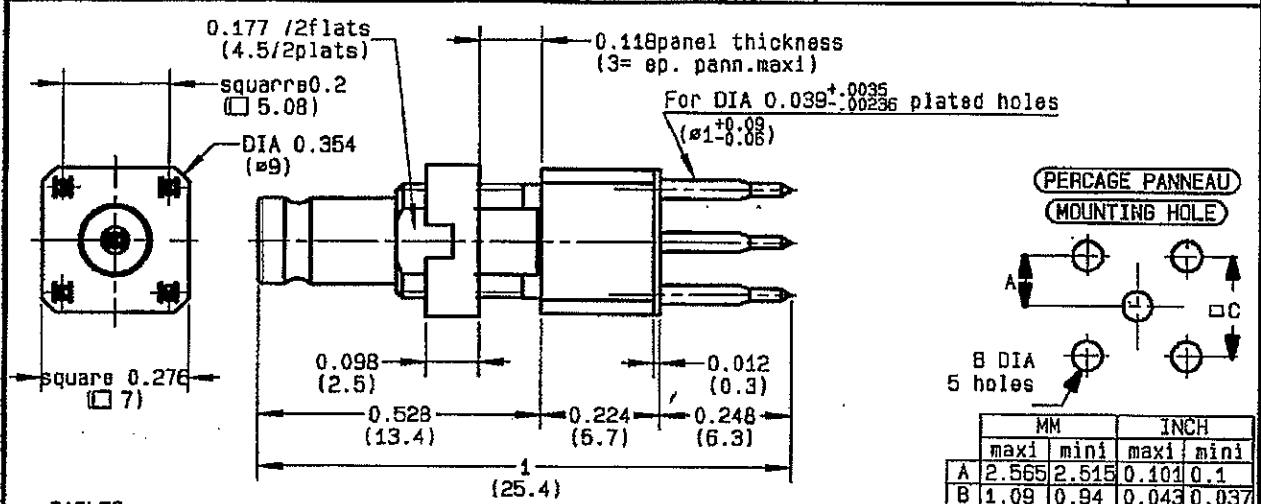


STRAIGHT BULK-HEAD RECEPTACLE PRINTED CIRCUIT
WITH PRESS-FIT BG TERMINATION

94-0105-024



CABLES : -

CHARACTERISTICS

NOMINAL IMPEDANCE	50 Ω
FREQUENCY RANGE	0-10 GHz
TEMPERATURE RATING	-40/+85 °C
VSWR	NA + - x F(GHz)Maxi
RF INSERTION LOSS	NA \sqrt{F} (GHz) dB Maxi
VOLTAGE RATING	350 Vrms Max
DIELECTRIC WITHSTANDING VOLTAGE	750 Vrms min
INSULATION RESISTANCE	5000 M Ω min
HERMETIC SEAL	- oo/s - Atm.cm3/s
LEAKAGE (pressurized only)	- psi - MPa
WEIGHT	0 Oz - g

STANDARDISATION	-
CABLE RETENTION	0 lb min N
CENTER CONTACT RETENTION	
Axial force - mating end	2.25 lb min 10 N
Axial force - opposite end	22.45 lb min 100 N
Torque (Min)	0 inoh.oz om.N
RECOMMENDED TORQUES	
Mating	0 inoh.lb om.N
Panel nut	8.85 inoh.lb 100 om.N
Clamp nut	0 inoh.lb om.N

CONSTRUCTION

CONNECTOR PARTS	MATERIALS	FINISH
BODY	BRASS	50 μ I GOLD OVER 80 μ I NICKEL
OUTER CONTACT	-	-
CENTER CONTACT	BERYLLIUM COPPER	50 μ I GOLD OVER 80 μ I NICKEL
INSULATOR	PTFE	-
PRESS-FIT	BRONZE	TIN 3
NUT	BRASS	NICKEL
INSULATING INSERT	PTFE	-
-	-	-
-	-	-

ISSUE	REVISION No	DESCRIPTION	BY	DATE
0126	01-05-012	4 notchs -> 2 steakes / fiets	TRIPIER	28-05-01
9549	-	update	BONOMINI	06-12-95

Initiated on 25/10/94

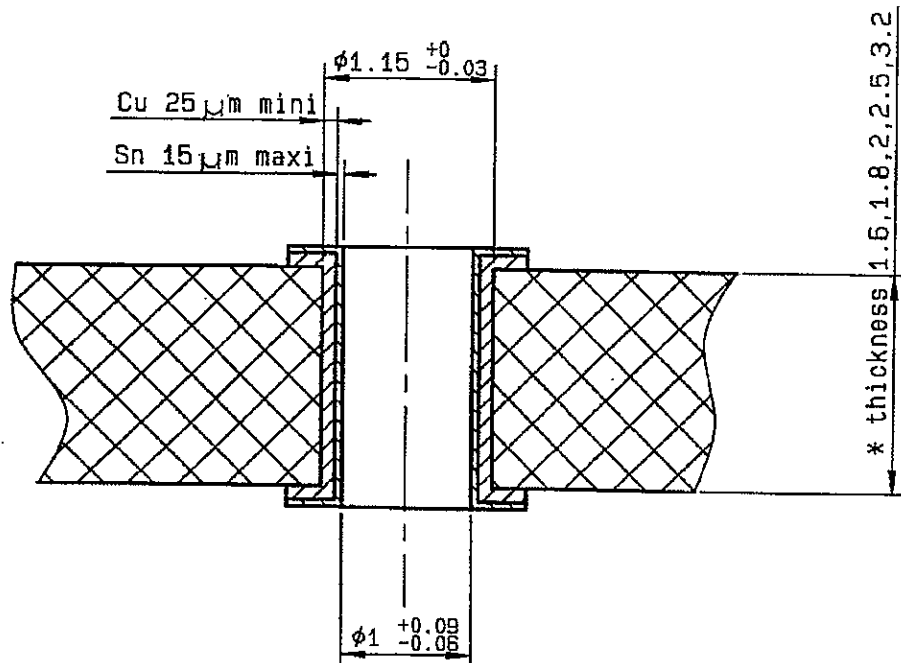
The information given here is subject to change without notice. Design changes may be in order to improve the product.



Approval by LELEU

BONOMINI

PC BOARD MATERIAL	GLASS FIBRE EPOXYD NEMA:G10,G11,FR4,FR5 DIN 40802 : EP-6C 01 , EP-6C 02
THICKNESS	1.6 mm *
HOLE	FOR 1mm COMPLIANT PIN
BORE-HOLE	$\phi 1.15 \text{ } 0/-0.03$
COPPER	$> 25 \mu\text{m}$
TIN	$< 15 \mu\text{m}$
FINAL DIAMETER	$\phi 1 \text{ } +0.09/-0.05$



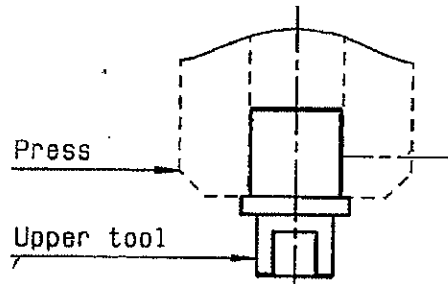
This information is given as an indication . In the continual goal to improve our products , we reserve the right to make any modifications judged necessary .

MOUNTING INSTRUCTIONS ON THE PCB
STRAIGHT CONNECTORS WITH PRESS-FIT TERMINATION

①

Slide the upper tool (R282.878.176)
into the machine (press) or yourself tool .

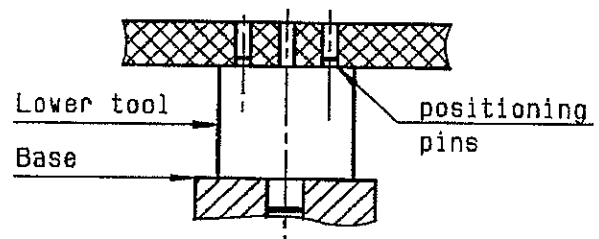
-
-
-



②

Slide the lower tool (R282.878.523)
into the base and place correctly the PCB
on this tool .(positioning pins)

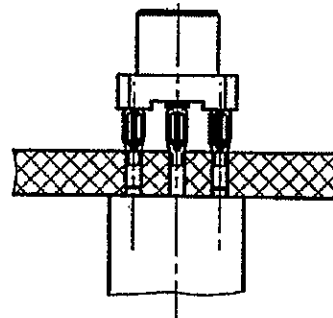
-
-
-



③

Place correctly the straight connector
with press-fit termination on the PCB and
introduce the press-fit extremity in the
holes of the PCB .

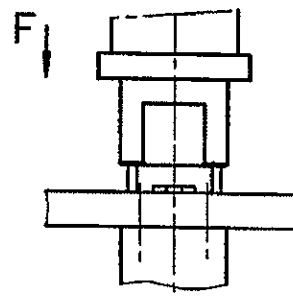
-
-
-



④

Push on the top (about 500 N) until
total insertion .(in direction F)
(Push connector body until it bottoms
against PCB) .

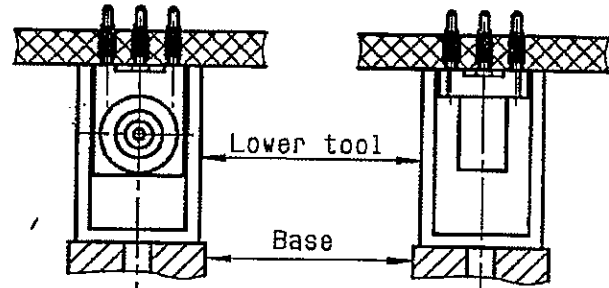
Remove the connector and the PCB
assembly .



REPLACEMENT INSTRUCTIONS ON THE PCB
STRAIGHT AND RIGHT ANGLE CONNECTORS WITH PRESS-FIT TERMINATION

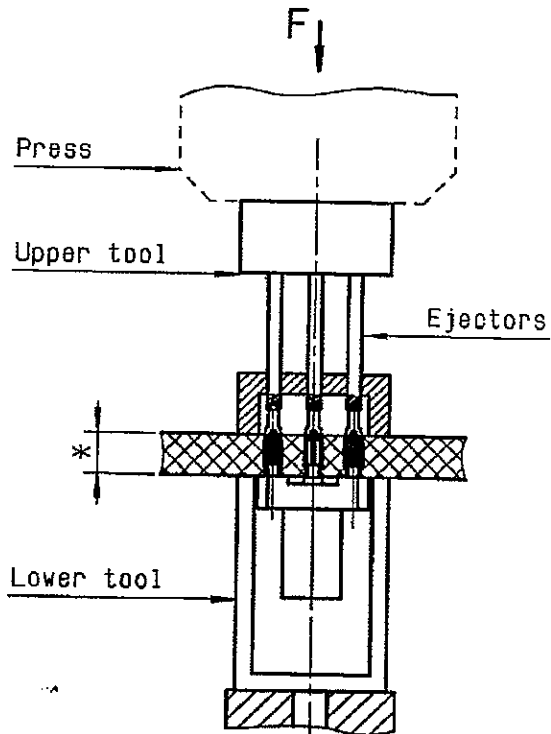
①

Place correctly the PCB and the connector on lower tool (R282.878.533)



②

Place the upper tool (R282.878.513) at the back of the connector and place correctly the ejectors on Press-fit pins .



③

Press the back of the upper tool to remove the connector (about 500N) into the connector slide down onto lower tool .

④

CAUTION !

It's impossible to use a COAXIPRESS a twice .

A plated hole of the PCB can't be used over 3 times .

* panel thickness: 1.6 to 7 mm